



St. Stephens Road, Bow, E3

BUTLER & STAG



A beautifully presented one bedroom flat with gated allocated parking set on the first floor of this small private development just moments from the Roman Road amenities and Victoria Park.



- One Double Bedroom
- Set At Rear Of Development
- Roman Road Amenities On Doorstep
- Gated Allocated Parking
- Beautifully Presented Throughout
- Secure Private Block
- Moments From Victoria Park
- Available 13th October

Set at the rear of the development, the property benefits from an inviting hallway entrance, lovely reception area with space for dining, semi-open plan kitchen, a generous double bedroom with fitted wardrobes and a contemporary bathroom. A stunning communal courtyard with seating and greenery complete this wonderful property.

Located just south of the open green spaces of Victoria Park, the independent shops and eateries along the Roman Road are on your doorstep. Transport links include nearby Mile End tube (Central, District and Hammersmith & City lines) and Bethnal Green (Central line) as well as frequent bus links along the Roman Road, all allowing for swift and direct access to The City, Canary Wharf, West End and beyond.



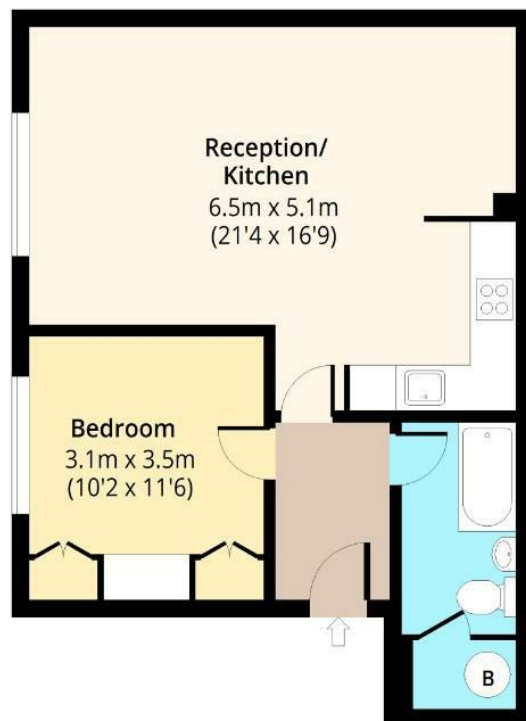


St. Stephens Road, E3



First Floor

Approx. 52.12 Sq. meters (561 Sq. feet)



Total area: approx. 52.12 Sq. meters (561 Sq. feet)
For illustration purposes only - not to scale

www.lpaplus.com

IMPORTANT NOTICE - These particulars have been prepared in good faith and they are not intended to constitute part of an offer or contract. We have not performed a structural survey on this property and the services, appliances and specific fittings have not been tested. All photographs, measurements, floor plans and distances referred to are given as a guide and should not be relied upon.

BUTLER & STAG

☎ 020 8102 1236

🏠 508 Roman Road, Bow, London, E3 5LU

✉ bow@butlerandstag.com

www.butlerandstag.uk